

# MOBILE<sup>(1)</sup> & AUTONOMOUS RFID GATE

INDUSTRIAL AND LOGISTICS TRACEABILITY



## BENEFITS

- 100% read rate (read speed exceeds 1,200 tags / sec.)<sup>(2)</sup>
- Modular structure perfect for industrial environments and applications
- 100% mobile and autonomous (Up to 2 days in normal use)
- Small footprint



UHF



TCP/IP  
POE



SERIAL  
INTERFACES



INDICATORS



USB  
WEDGE



RESISTANCE  
EQ IP53

The SPECTRE GATE combines the best of RFID technology with a mobile, communicating and smart gate solution. It is designed to meet all specific needs of Industry 4.0.

This connected gate automates logistics tracking and production assets quickly and accurately.

It is the perfect fit for industrial applications (identification at factory entrance / exits, flow monitoring, combating FOD and FME, etc.), and supply chain applications (loading / unloading on docks, etc.).

## HIGH PERFORMANCE READING

SPECTRE GATE includes the SPECTRE Industry multi-antenna reader. It offers accurate identification, speed and reliability (reading in excess of 1,200 tags / sec)<sup>(2)</sup>.

This unrivalled level of performance makes it the best industrial RFID gate solution for real-time, mass and in-motion identification applications.

## SCALABLE, MOBILE, AND AUTONOMOUS

SPECTRE GATE has a modular structure that can be adapted to the specifics of each site, environment, and business application.

Its compact structure is also foldable to save space and ease transportation.

This gate is mounted on directional wheels with brakes and contains a complete computer cabinet with wireless network connection.

SPECTRE GATE offers mobility within the warehouse or premises. Its battery operated power cabinet permits up to 2 days of operational time in normal use.

## EASY INTEGRATION

SPECTRE GATE includes customizable and fully-functional demo software ideal for pilot-site testing and trials. The SSCP® protocol which drives the UHF reader, combined with its SDK shorten the development time of custom interfaces.

Easy configuration of inputs / outputs (for the use of sensors, light columns, flashing lights etc.) and the use of the SPECTRE antenna's sound and light indicators simplify the integration and configuration of business applications.

## STANDING THE TEST OF TIME

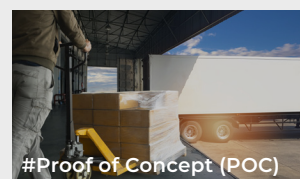
Its robust structure and unique design are suitable for all industrial and logistical traceability applications in harsh environments (manufacturing workshops, factories, assembly lines, logistical warehouses, unloading docks, etc.).

## BUSINESS APPLICATION



## THE + SMART

Specially adapted to facilitate tests and trials at your pilot sites



## SPECTRE INDUSTRY READER AND ANTENNAS SPECIFICATIONS

Operating frequency / standards	UHF - 2 versions: UHF - 2 versions: 865 - 868 MHz: 866 MHz ETSI (Europe), Morocco (regulation n°ANRT/DG/h°7-10) ... 902 - 928 MHz: 915 MHz FCC Part 15 (USA), Australia, New Zealand ...
«Air interface» protocol and functions	EPC1 Gen 2 / ISO18000-63 - Untraceable - Block Permalock - ATA SPEC 2000 compatibility
Mode	Managed (read/write)
Antennas	Up to 4 remote antennas / Possibility to attach the reader to an antenna (SLI version)
Read performance <sup>(2)</sup>	3D ID System technology - Reading speed higher than 1,200 tags/sec <sup>(2)</sup> - Processing capacity higher than 250 tags/sec <sup>(2)</sup> with anti-collision system - Reading distance up to 14 m <sup>(2)</sup> / Maximum RF power up to 32 dBm
Communication interfaces	TCP-IP / RS232 / RS485 with SSCP® communication protocol + USB WEDGE (keyboard emulation) / WLAN (via connection to a Wifi router over Ethernet - optional)
Inputs / Outputs (GPIO)	4 inputs / 4 outputs opto-coupled and polarized at V+opt and V-opt (Max 30 V) - Input: 5 mA maximum each - Output: 200 mA maximum each GPIO intended for applications with detection cells, traffic light control, industrial buzzer, etc.
Light and audio indicator	LED: 360 colors ▲ ▲ ▲ - Buzzer: 3 sound levels (on antenna) / LED voltage and communication (on reader)
Power supply	From 12 VDC to 30 VDC (24 VDC typical) or PoE <sup>®</sup> - Optimized power consumption: 24 VDC: 0.6 A
Connections	Screwable jack (power supply) - RJ45 (Ethernet: Lantronix module) - DE9 (Serial) - M12 A-coded (GPIO) - USB C (keyboard emulation) TNC Reverse (antenna ports)
Materials	Reader: aluminum / Antenna: ABS and polycarbonate (ABS-PC)
Dimensions (h x w x d)	Reader only (SMI): 271.7 x 149.9 x 44.50 mm excluding connectors (general tolerance according to standard ISO NFT 58-000) Reader + antenna (SLI): 348.7 x 279.2 x 89.48 mm (general tolerance according to standard ISO NFT 58-000)
Operating temperatures	- 25°C to + 60°C / - 13°F to + 140°F - Indoor use
Water and dust-proofing	Reader only (SMI): Eq. IP53 / IP66 certified antenna Reinforced structure with high resistance to shock and vibration (IK10 certified, IEC 60068-2-6 and MIL - STD-810G standards)
Mounting	- Wall mounted with ball joint for inclined installation (adjustable on 3 axes) - On a pole, on a gate, on or under a workbench Compatible with VESA 75 x 75 universal mounting kits
Compatible cables and connectors (optional)	TNC Reverse coaxial cables 1.5, 3, 9 and 12 m to connect the antennas / can be connected serially (max. 12 m) M12 A-coded connector alone or pre-wired / DE-9 connector alone or pre-wired / Screw-in jack connector alone or pre-wired to 24 VDC power supply / RJ45 cable / USB-C cable / USB-A
Personalization	High quality direct printing of your logo on the reader or antenna
Certifications	CE, FCC and UL

## GATE SPECIFICATIONS

Gate structure	Bosh aluminum profile 45 x 45 mm (Grey) - Rigid PVC cable duct (Black) - 2 x 2 directional wheels - 2 x 2 directional wheels with brake
Autonomous power supply cabinet	Tecsup 40 Ah 750Wh (IP66) self-contained energy boxes with 24 VDC and 230 VAC power supply
Computer cabinet	Materials: Simopor cabinet (Black) + logo printing on vinyl Computer equipment: PC Dell Optiplex i5 Micro Form Factor - LDLC 21.5" LED Touch Pro Touch screen - Netgear switch PoE Ethernet Connections on the front panel: USB - RJ45 - Amphenol connectors for 24 VDC - 230 VAC socket for charging the power cabinet - Cable management
Dimensions (h x w x d)	Minimum size: 2,321 x 2,600 x 1,420.5 cm Maximum size: 2,321 x 4,100 x 1,420.5 cm
Indicator lights	Werma light column (3 colors)
Embedded software	SPECTRE GATE: Demo software for truck loading/unloading demonstrations SESPRO: Software tool for configuration and control of SPECTRE Industry UHF RFID readers
Transport case (Option)	Wooden transport box with protection for the gate 4 directional wheels with brakes + 2 handles
Part numbers	SPECTRE GATE - R/W SSCP - TCP-IP PoE - 865-868 MHz ..... SPG-W44-A/U04-8AA/3 SPECTRE GATE - R/W SSCP - TCP-IP PoE - 902-928 MHz ..... SPG-W54-A/U04-8AA/3 Option: Wooden transport case - 1623 x 1750 x 850 4 directional wheels with brakes + 2 handles ..... CAISSE-BOIS-PORTIQUE

## DISCOVER THE SPECTRE RANGE



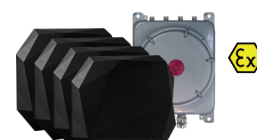
SPECTRE Industry (SMI)



SPECTRE Extrem (SME)



SPECTRE ATX



SPECTRE ATX4

<sup>(1)</sup> Also available in fixed version. <sup>(2)</sup> WARNING, information on speed, performance, distance and reading rate: measured at the center of the antenna, depending on the type of tag, the type of media and its positioning, the number and configuration of the antenna, the temperature, and the supply voltage. Installation conditions and the environment may affect reading speeds, performance, and distances. <sup>(3)</sup> Requires a PoE switch or injector.  
Legal Notice: STid, IronTag®, SSCP® and SPAC® are registered trademarks of STid SAS. All trademarks mentioned in this document belong to their respective owners. All rights reserved - This document is the sole property of STid. STid reserves the right, at any time and without notice, to make changes to this document and/or to stop marketing its products and services. The photographs are non-contractual.

### Headquarters / EMEA

13850 Créennes, France  
Tel.: +33 (0)4 42 12 60 60

### PARIS-IDF Office

92290 Châtenay-Malabry, France  
Tel.: +33 (0)1 43 50 11 43

### STid UK Ltd.

Gallows Hill, Warwick CV34 6UW, UK  
Tel.: +44 (0) 192 621 7884

### NORTH AMERICA Office

Irving, Texas 75063-2670, USA  
Tel.: +1 469 524 3442

### LATINO AMERICA Office

San Rafael 06470 CDMX, México  
Tel.: +521 (55) 5256 4706

info@stid.com

www.stid-industry.com